

# DrumQuik® for GoatThroat Pumps

Worker Safety and Environmental Compliance

## Replace Standard Drum Seal Installation with DrumQuik for GoatThroat

### Assembly:

Remove drum seal, ring, and expander.

See below for details.

Hand tighten adapter on to pump until it stops.

### Installation:

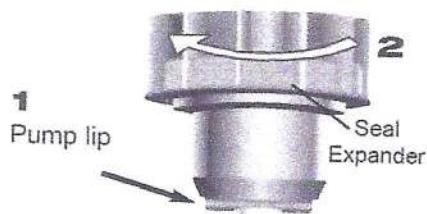
See following page for installation instructions

### Operation:

See page 11 - 12 of Operation Manual for instructions.



- 1 To remove old drum seal, ease leading inner edge of drum seal out and over the lip on base of pump body using small flat head screwdriver.

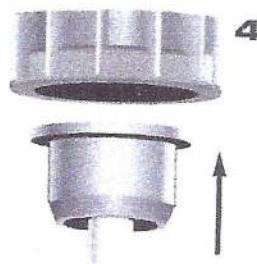


- 2 Screw seal expander clockwise as far as possible which pushes drum seal down and off pump. For small drum seal, soak bottom of pump with drum seal in hottest water available for 2 - 5 minutes to facilitate removal.



- 3 Re-tighten seal expander to expose clamp ring. Push drum seal off of pump with clamp ring.

- 4 Lubricate lip of pump body with Molykote 111 compound. For clean room operations, do not use grease. Soak replacement drum seal in hottest water available for 2 - 5 minutes. Press new drum seal into position. The seal should fit snugly on the lip.



Culder Products Company  
1601 Westgate Drive  
St. Paul, Minnesota 55114  
U.S.A.

Phone: 651-645-8991  
Fax: 651-645-8434  
Toll Free: 800-444-7474  
info@culder.com  
www.culder.com



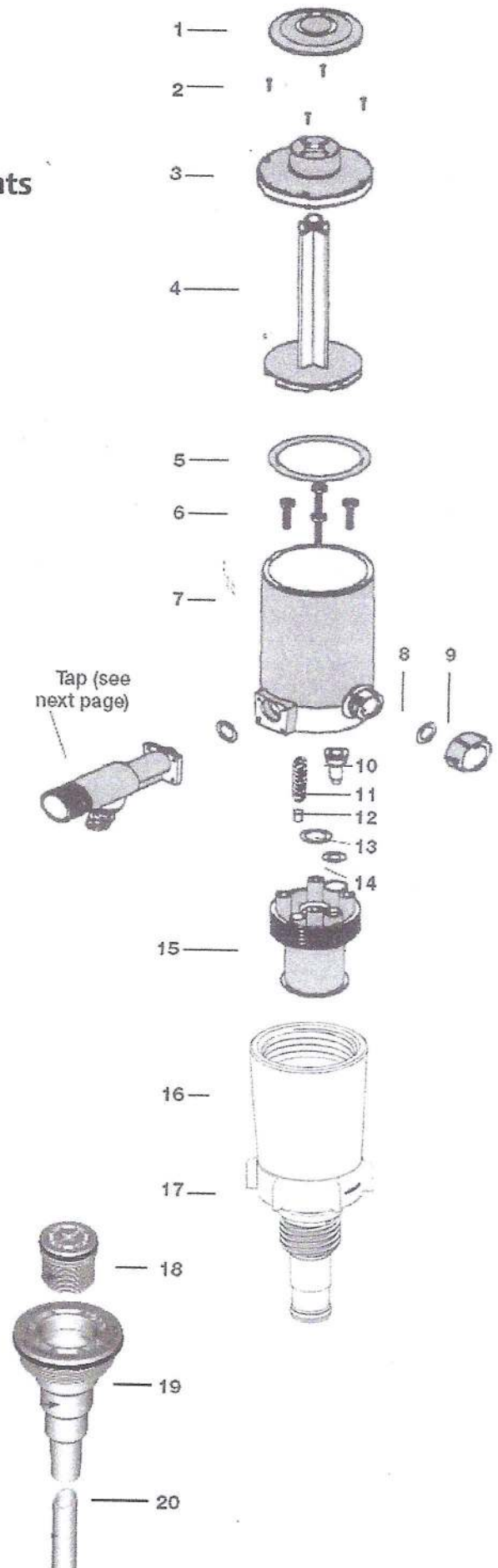
Westcott Distribution Inc.  
60 Shell Avenue  
Milford, CT 06460  
U.S.A.

Phone: 646-486-3546  
Fax: 203-243-6070  
Toll Free: 877-649-4625  
info@goatthroat.com  
www.goatthroat.com

GoatThroat is a registered trademark of Westcott Distribution Inc.

## DrumQuik for GoatThroat Pump Components

- 1 Piston screw cap
- 2 Body cap screws (4)
- 3 Body cap
- 4 Main body piston
- 5 Piston o-ring
- 6 Manifold screws (4)
- 7 Pump body
- 8 Pressure release valve o-ring
- 9 Pressure release knob
- 10 Non-return valve (check valve)
- 11 Safety release spring
- 12 Safety release plug
- 13 Sub-assembly o-ring
- 14 Manifold o-ring
- 15 Pump manifold
- 16 DQGT body
- 17 DQGT lock-ring
- 18 Shipping plug (Sold Separately)
- 19 Drum insert (Sold Separately)
- 20 Dip tube (Sold Separately)



# Required Accessories for DrumQuik



19 Drum insert

20 Dip tube

Drum Inserts Options:	DQPRO-EPDM-G2-NPS-STEEL	2" NPS thread (EPDM seal for STEEL DRUMS & IBC's) Required: 1 Per pump
	DQPRO-EPDM-G2-NPS-PL	2" NPS thread (EPDM bung seal for PLASTIC DRUMS & IBC's) Required: 1 Per pump
	DQPRO-VITON-G2-NPS-STEEL	2" NPS thread (VITON seal for STEEL DRUMS & IBC's) Required: 1 Per pump
	DQPRO-VITON-G2-NPS-PL	2" NPS thread (VITON bung seal for PLASTIC DRUMS & IBC's) Required: 1 Per pump
Dip Tube:	DQPRO DT 0985	Dip-tube, 905mm long (985 from sealing surface of Drum Insert to end of DT) (for 55 gallon (220 l) drums, may need to trim to fit for other size drums) Required - 1 per pump