



High Pressure Adapter - 226-107



1) Remove Drum Seal – see page 21 of your user’s manual.

2) Remove Parts 16 and 17 from part #15.

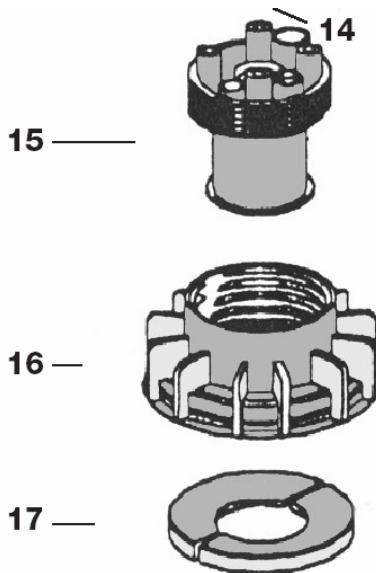
3) Screw Part # 15 into adapter. A washer has been installed on your adapter – This is _____ rubber and is compatible with your pump.

4) Measure and install siphon tube per these instructions:
 a) Remove adapter from pump and firmly screw onto container.
 b) Place container on a level surface.
 c) Measure distance from level surface to top of fitting.
 d) Assemble siphon tube per instructions.
 e) Cut flat side of probe to 5/8-inch shorter than this measure.

For example, if length to top of fitting is 36-3/8-inch, cut probe 34-6/8-inch.

5) Put Adapter back on pump and tighten adapter on pump very firmly.

6) You may need to add some Teflon tape to threads of part#15 if you don’t get a secure seal with washer.



To eliminate use of teflon tape to seal standoff, use your

→ 2-inch metal locknut and
 → ASA568-331 o-ring which matches your pump.

Screw down the metal locknut to compress o-ring against drum.